

Luxteel[®]

Premium material for Elevator

Luxteel is Dongkuk Steel's flagship colored steel plate brand for interior and exterior application created to fulfill any construction purpose based on its superior design and versatility. In particular, Luxteel developed for elevators is reasonably priced with respect to stainless steel and requires no complex post-processing procedures, exhibiting an impressive competitive advantage in terms of both price and lead time.

Furthermore, it offers a diverse range of stylish patterns and textures to choose from and adds to the luxurious ambience of any elevator. Luxteel has already been selected by a globally renowned elevator company and applied to the company's products as the main material, receiving many positive responses.

By selecting luxteel you can add perfection to your elevators.



Domestic

01

Head Office
FERRUM TOWER, 19, Eulji-ro 5-gil,
Jung-gu, Seoul, Korea
Tel : 82-2-2222-0114
Fax : 82-2-317-9200-5

04

Busan Office
102, Sinseon-ro, Nam-gu, Busan, Korea
Tel : 82-51-640-5967, 5958
Fax : 82-2-317-9200-5

02

Busan Plant
102, Sinseon-ro, Nam-gu, Busan, Korea
Tel : 82-51-640-5114
Fax : 82-2-317-9209

05

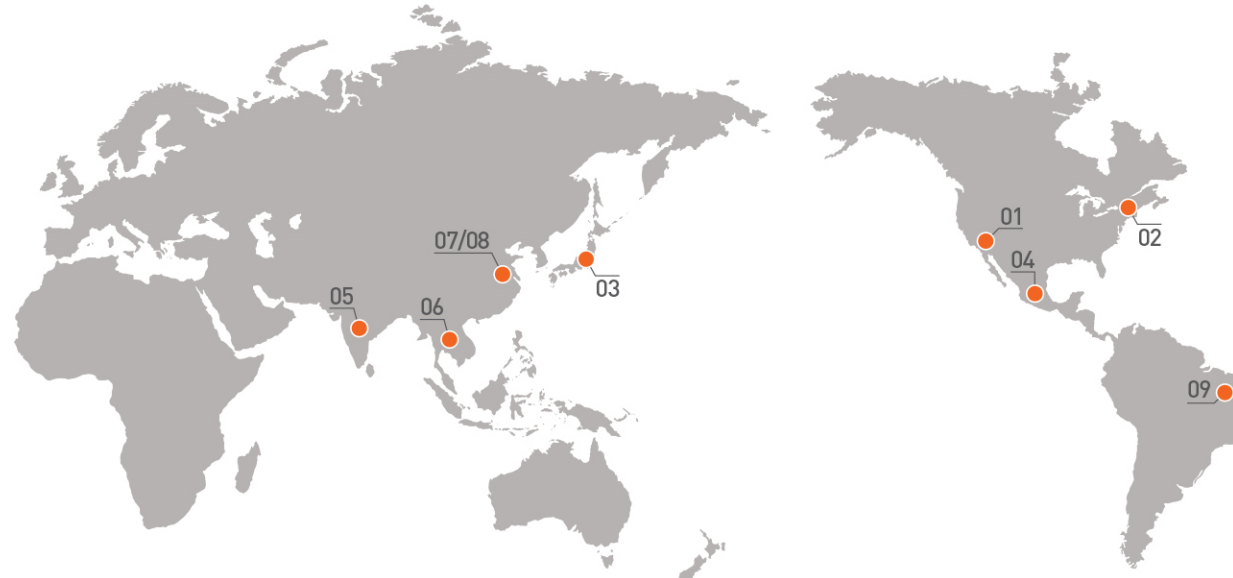
Honam Office
DONGKUK STEEL, Floor 10th, 282, Mujin-daero,
Gwangsan-gu, Gwangju, Korea
Tel : 82-62-943-1973-9
Fax : 82-2-317-9200-5

03

Joongbu Office
21, Jangsannam-ro, Dalseo-gu,
Daegu, Korea (Beop-jo Building 903)
Tel : 82-53-557-4064
Fax : 82-2-317-9200-5



Overseas Subsidiaries



01

Corporation in U.S.A
LOS ANGELES BRANCH
DONGKUK INTERNATIONAL, INC.
19750 Magellan Drive Torrance, CA. 90502, U.S.A
Tel : 1-310-523-9595 Fax : 1-310-523-9599

02

New York Branch
NEW YORK OFFICE
DONGKUK INTERNATIONAL, INC.
400 Kelby Street, 11th Floor, Fort Lee, NJ 07024, U.S.A
Tel : 1-201-592-8600 Fax : 1-201-947-3999

03

Corporation in Japan
TOKYO BRANCH
DONGKUK CORPORATION
7Floor, PMO Nihombashi Kayaba-cho, 3-11-10,
Chuo-ku, Tokyo 103-0025, Japan
Tel : 81-3-5623-5723 Fax : 81-3-5623-5722

04

Coil Center in Mexico
DONGKUK STEEL MEXICO SA DE CV
Av. Internacional #303 Parque Industrial Huinala,
Apodaca, Nuevo Leon, Mexico C.P. 66645
Tel : 52-81-8145-2122 Fax : 52-81-8145-4350

05

Coil Center in India
DONGKUK STEEL INDIA PVT LTD.
B-3/2, Ecotech-1, Extension, Greater Noida,
UP-201 308, India
Tel : 91-120-481-8156 Fax : 91-813-037-6465

06

Coil Center in Thailand
DONGKUK STEEL (THAILAND) LTD.
Pinthong Industrial Estate Project 3, NO. 217/9 Moo 6,
Bowin, Sriracha, Chonburi 20230, Thailand
Tel : 66-38-110-570 Fax : 66-38-110-577

07

Main Office in China
SALES DIVISION IN CHINA
13F, No.39 Dongting Rd. Xishan Zone, Wuxi,
Jiangsu, China, Zip 214000
Tel : 86-510-8101-2003 Fax : 86-510-8101-2020

08

Dongkuk Steel China
DONGKUK STEEL CHINA CO., LTD.
Xiangang Zone Jiangyin Riverside Economy
Development Area, Jiangyin City, Jiangsu, China 214442
Tel : 86-510-8603-2308 Fax : 86-510-8603-2318-9

09

Corporation in Brazil
CSP(Companhia Siderúrgica do Pecém)
Rodovia CE 422, S/N, Km 11.5,
São Gonçalo do Amarante, CE, Brazil CEP 62670-000
Tel : 55-85-3033-3800 Fax : 55-85-3033-3899

Luxteel[®]

Premium material for Elevator

DONGKUK STEEL

Newly write the history of steel with a unique spirit of challenge.

In 1954, when it was the time to rebuild the frame of this land, DONGKUK STEEL established a private steel company for the first time in Korea with a mission to erect the steel business above all. We have introduced high-class technologies and high-tech equipments and established a new milestone in the domestic industry for the past sixty years. DONGKUK STEEL now has stood atop as a leader of the world market. We shall always be with you with solid conviction and strong competitiveness that are the symbols of steel.



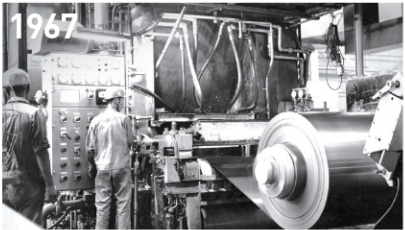
Annual Manufacturing Capability

Pre-Painted Steel	Steel Making / Casting	Reinforcing Bars	Sections	Steel Plates	Zn-Coated Steel
750	3.6	2.75	1.3	1.5	1.7
thsd tons	mil tons	mil tons	mil tons	mil tons	mil tons

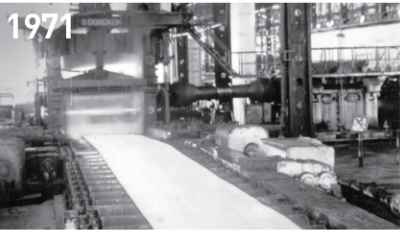
Milestones in the journey towards excellence



Operated blast furnace in Korea



Manufactured cold rolled steel in Korea



Manufactured steel plate in Korea



Start selling color coated steel



Launching Luxteel



Completion of CSP / Completion of No. 9CCL

Product Features



Aesthetically Appealing
The sophisticated patterns and textures unique to Luxteel add to the luxurious ambience of any elevator.



Formable and Workable
Luxteel exhibits outstanding formability and workability, thereby reducing material loss and enabling a perfect finish.



Incombustible
Luxteel is incombustible and ensures fire safety.



Eco-friendly
Luxteel is made with materials that are harmless to the human body and can be 100% recycled.

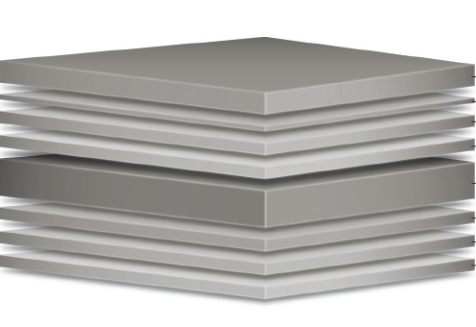


Strong and Durable
Luxteel successfully withstands high speed and wind pressure at higher altitudes.



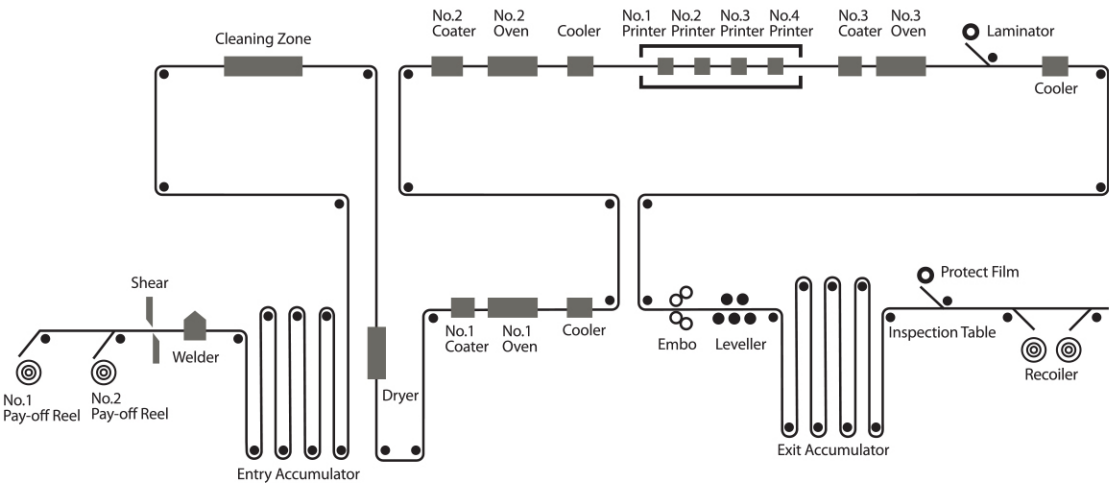
Cost-effective
Luxteel is pre-painted and thus substantially reduces post-processing procedures. It is reasonably priced with respect to stainless steel.

Product Structure

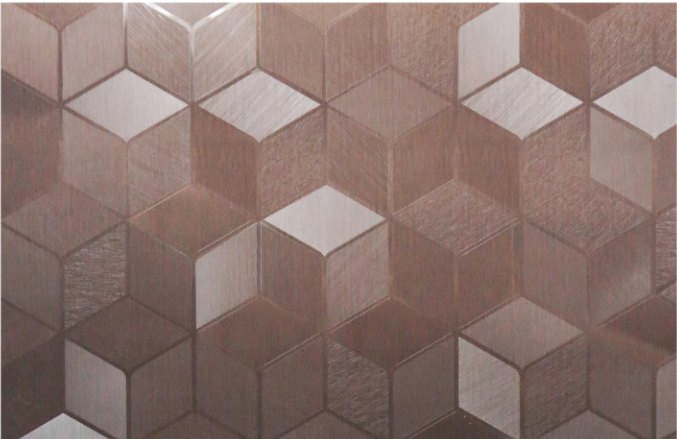


- 1. Protective Film**
The protective film prevents from scratches and contamination.
- 2. Clear**
The transparent layer protects layers and enhances the appearance of the surfaces.
- 3. Printing**
These layers creative various print patterns.
- 4. Base**
It works as the base color for printed layers giving it excellent mechanical & chemical properties.
- 5. Primer**
The chemical solution improves workability, corrosion resistance and adhesion to primer coating.
- 6. Chemical Treatment**
This chemical layer improves corrosion resistance and adhesion of the base metal.
- 7. Base Metal**
CR, EGI, CGI & G/L is commonly applied to home appliance out-case and building panels.
- 8. Back**
This treatment improves corrosion resistance of the backside and adhesion to urethane.

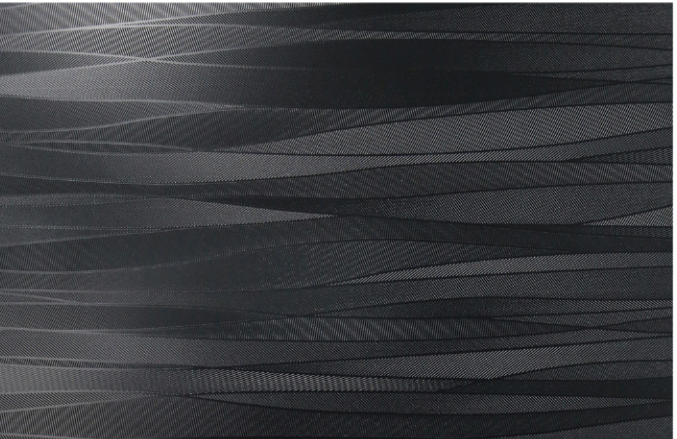
Product Process



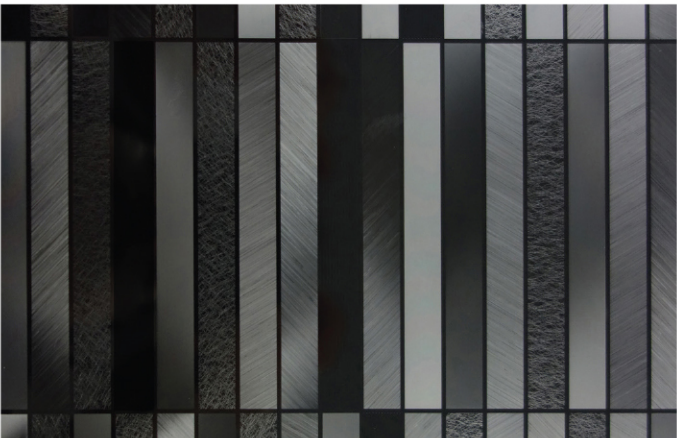
Product Images



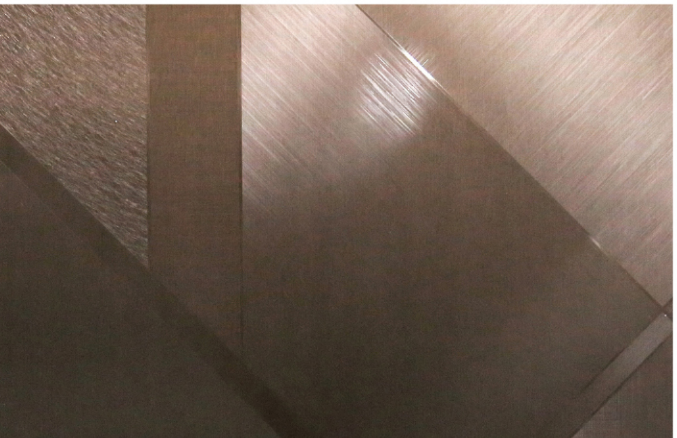
VP013



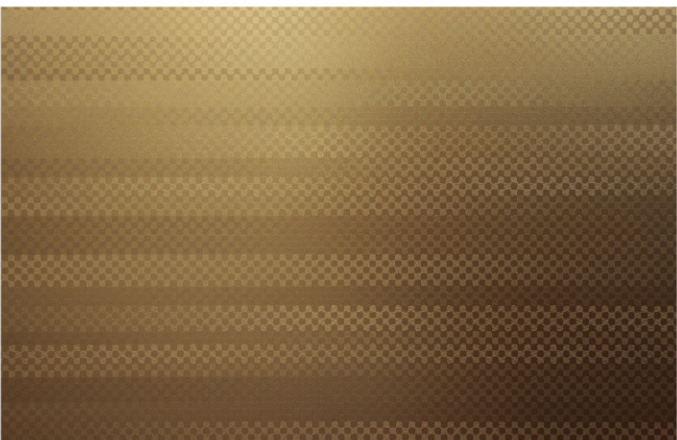
IPA01



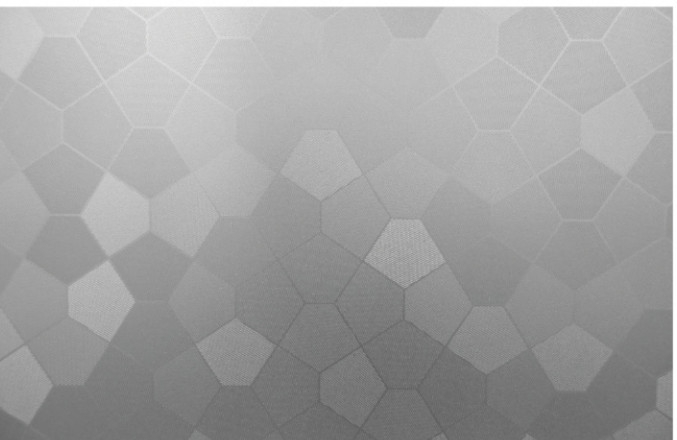
VP015



VP014



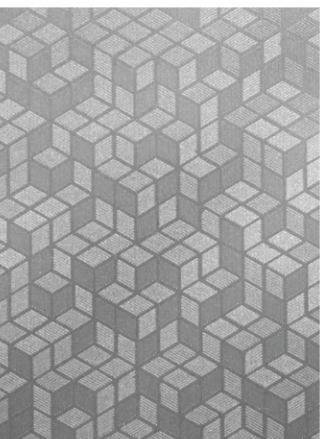
IPF01



IPC01



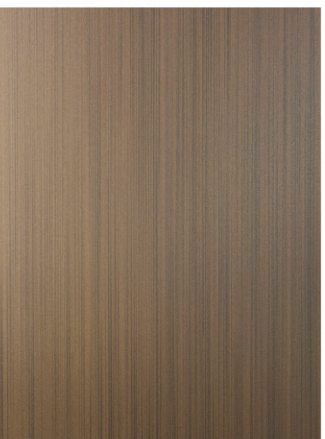
VP019



IPG01



PZ163



PH111